

LED WELLGLASS LIGHTING FIXTURES

WG1 SERIES Copper-free aluminium



- Explosion-proof wellglass lighting fixture made in copper-free aluminium and tempered glass; provided with AISI304 or AISI316L stainless steel hardware and screws;
- LED lifetime-saving technology and overvoltage protection system;
- High resistance to corrosion and designed for the harshest temperatures.
- LED efficiency up to 187 lm/W.

MARKING

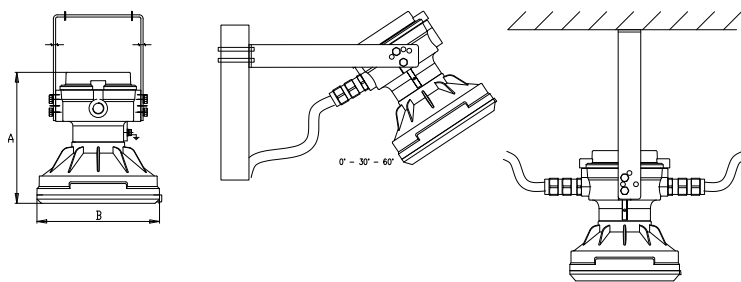
II 2 G Ex db eb IIC T6/T5/T4 Gb

II 2 D Ex tb IIIC T85°C/T100°C/T135°C Db

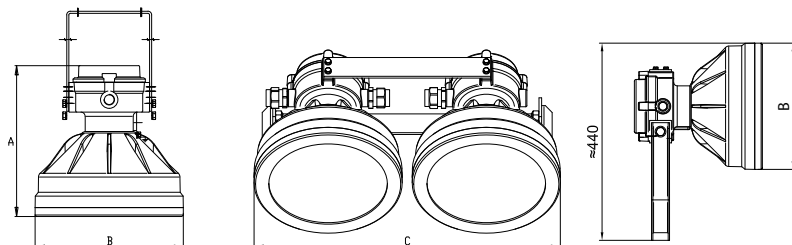
TECHNICAL FEATURES

Material	Copper-free aluminium and tempered glass
IP rating	IP66
Ambient temperature range	-60°C to +60°C
Approvals	INERIS 25 ATEX 0015X IECEX INE 25.0026X EAC KG417-039.IT.02.06788
Zones	Gas Zone: 1, 2 Dust Zone: 21, 22
Rated voltage	220-240 VAC
Frequency	50-60 Hz
Colour rendering index	70 CRI
Colour temperature	4.000 K 6.500 K
Power factor	cos φ ≥ 0,98
Surge protection	L/N: 2 kV L-N/PE: 8 kV
Driver	Integrated - Equipped with thermal guard protection to prevent overtemperature
LED Lifetime (L70) Ta+25°C	> 50.000 h (@Tc85°C)
Hardware and screws	AISI316L stainless steel
Coating	Painted by polyuretane painting: RAL5014 painting cycle C4 suitable for On-Shore The reference standard is UNI EN ISO 12944 - 1: 2018 Upon request other colours and painting cycles
Entries	N°2 entries M25 (standard configuration) or MARECHAL® 5 amps PNCX connector upon request; Upon request N° 2 entries M20 or 3/4" NPT
Through wiring	Loop-in/Loop-out
Plug	Standard configuration includes 1 plastic dustproof plug for M25 entry protection; 1 x M25 brass nickel chrome plated stopping plug c/w gasket (mounted)
Accessories upon request	Mounting kit in AISI316L stainless steel: Pole mounting kit, from 1 1/2" up to 2" Cable gland kit in brass nickel chrome or AISI316L stainless steel Protection guard in AISI316L stainless steel Mounting plate for internal lighting tank inspection

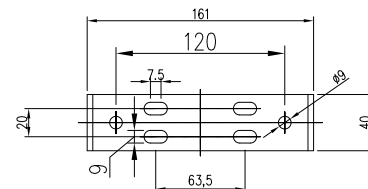
Dimensions – WG1 SERIES



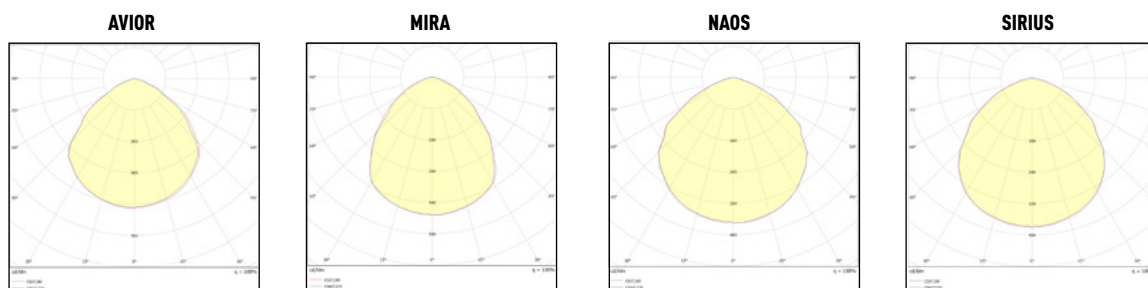
Dimensions – WG1-SIRIUS -2X



Mounting bracket fixing detail



Photometric light curves



WG1 Series– Wellglass lighting fixtures

CODE	TYPE	POWER [W]	LUMEN [lm]	LUMEN NET [lm]	LUM.EFF [LM/W]	COLOUR TEMP. [K]	DIMENSIONS [MM]			WEIGHT [KG]
							A	B	C	
A0302645A0001	AVIOR	23	4.150	2.810	180	6.500	215	165	-	5,40
A0302645A0002						4.000				
A0303645A0001	MIRA	45	8.400	5.290	187	6.500	236	195	-	6,00
A0303645A0002						4.000				
A0304670A0001	NAOS	70	12.972	8.517	185	6.500	231	214	-	5,00
A0304670A0002						4.000				
A0305645A0001	SIRIUS	134	24.150	16.030	180	6.500	290	280	-	10,5
A0305645A0002						4.000				
A03056B8A0001	SIRIUS -2X	268	48.800	32.000	182	6.500	290	280	581	27,00
A03056B8A0002						4.000				
A03026E2A0001	AVIOR-EM180'	23	1.800	1.300	180	6.500	457	216	-	9,00
A03026E2A0002						4.000				
A03036E3A0001	MIRA- EM180'	45	1.800	1.300	187	6.500	475	216	-	9,50
A03036E3A0002						4.000				
A03046E4A0001	NAOS-EM180'	70	1800	1300	185	6.500	482	216	-	9,00
A03046E4A0002						4.000				
A03056E5A0001	SIRIUS-EM180'	134	1.800	1.300	180	6.500	530	280	-	14,00
A03056E5A0002						4.000				

Pole mounting kit

CODE	TYPE
A601103010001	P4 KIT - 1" 1/2 POLE MOUNTING KIT
A601103010002	P5 KIT - 2" POLE MOUNTING KIT