



### PSRC.. Series On-load switches

CODE SPARE PART	TYPE	N° OF POLES	AMPERE A	WEIGHT (Kg)	DIAGRAM
B090603000013	PSRC-120 - ON LOAD SWITCH	1	20	0,13	
B090603000015	PSRC-220 - ON LOAD SWITCH	2	20	0,16	
B090603000017	PSRC-320 - ON LOAD SWITCH	3	20	0,20	
B090603000020	PSRC-420 - ON LOAD SWITCH	4	20	0,20	
B090603000014	PSRC-132 - ON LOAD SWITCH	1	32	0,20	
B090603000016	PSRC-232 - ON LOAD SWITCH	2	32	0,20	
B090603000018	PSRC-332 - ON LOAD SWITCH	3	32	0,25	
B090603000012	PSRC-432 - ON LOAD SWITCH	4	32	0,25	

\*63A Upon request

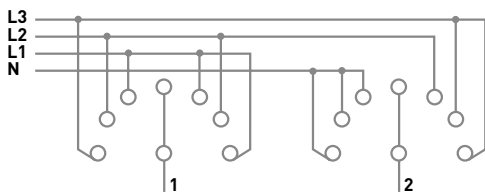
### PSRC-D.. Series Change-over switch

CODE SPARE PART	TYPE	N° OF POLES	AMPERE A	WEIGHT (Kg)	DIAGRAM
B090603000009	PSRC-D 120 - CHANGE OVER SWITCH	1	20	0,13	
B090603000010	PSRC-D 220 - CHANGE OVER SWITCH	2	20	0,20	
B090603000029	PSRC-D 320 - CHANGE OVER SWITCH	3	20	0,25	

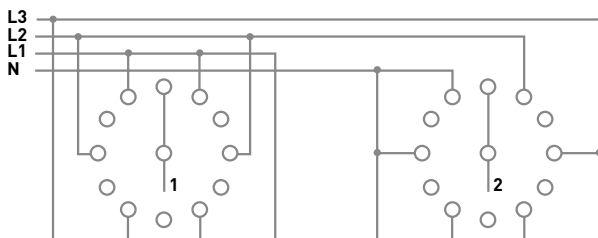
**PSRC.. Series Step switch**

CODE SPARE PART	TYPE	N° OF POLES	AMPERE A	WEIGHT (Kg)	DIAGRAM
B090603000021	PSRC-C 120 - STEP SWITCH	1	20	0,13	
B090603000022	PSRC-C 220 - STEP SWITCH	2	20	0,20	
B090603000007	PSRC-C 320 - STEP SWITCH	3	20	0,25	
B090603000008	PSRC-C 420 - STEP SWITCH	4	20	0,30	
B090603000003	PSRC-C VOLTMETER SELECTOR SWITCH 7 POS.	-	-	-	SEE BELOW
B090603000004	PSRC-C VOLTMETER SELECTOR SWITCH 12 POS.	-	-	-	SEE BELOW
B090100S00760	PSRC-C AMMETER SELECTOR SWITCH 4 POS.	-	-	-	SEE BELOW

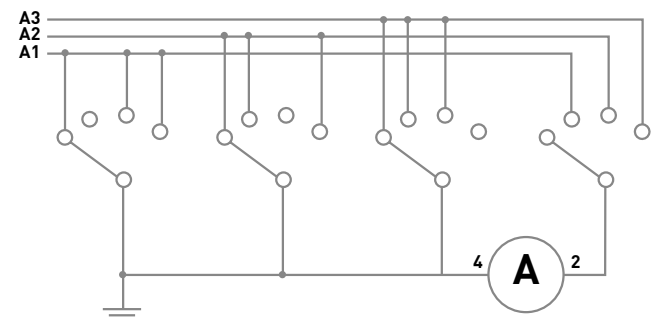
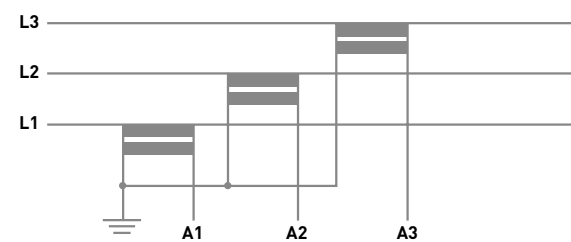
**Voltmeter selector switch 7 pos.**



**Voltmeter selector switch 12 pos.**



**Ammeter selector switch 4 pos.**



**Special versions can be manufactured upon request. For further information contact our Sales Office.**