

# METALLIC CABLE GLANDS

## Single seal



A large range of single seal cable glands

- Armoured & unarmoured cable
- Lead sheathed cable
- Barrier type

Suitable for Zone 1/2 and Zone 21/22.

### MARKING\*

II 2 GD  
Ex db/eb IIC  
Ex db/eb I  
Ex tb IIIC IP66

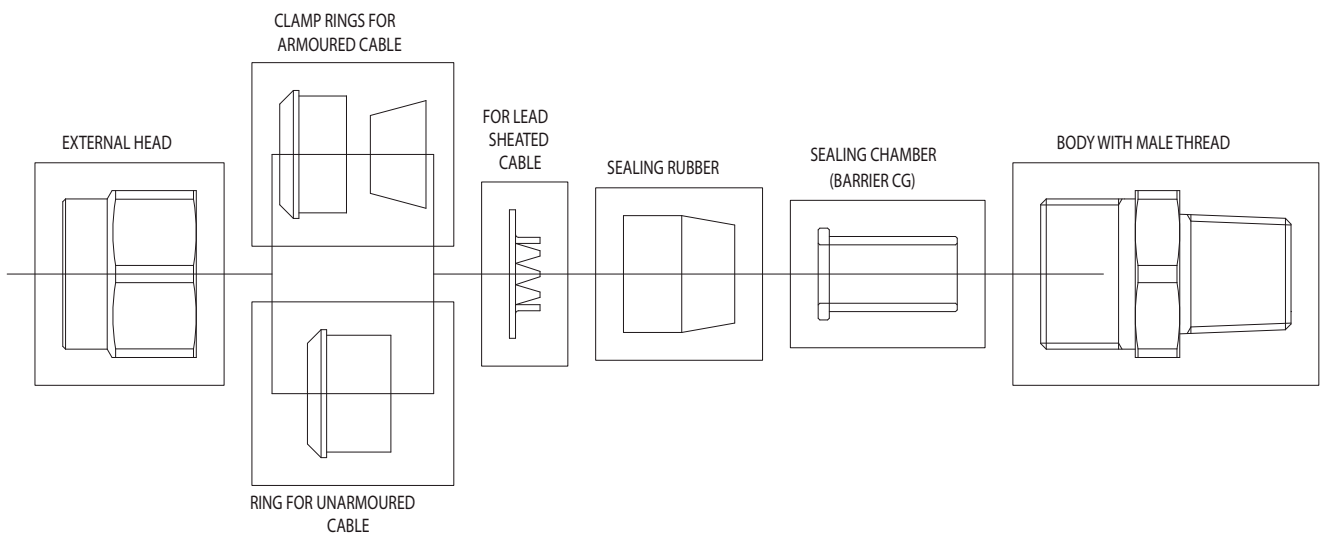
I M2  
Ex db/eb I

\* For group I certification is up to size 6.

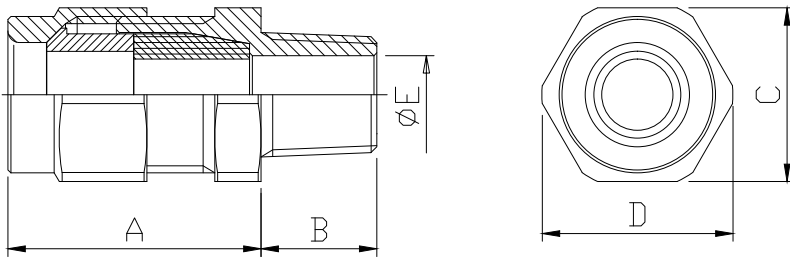
## TECHNICAL FEATURES

<b>Material</b>	Nickel chrome plated brass AISI316L stainless steel
<b>IP rating</b>	IP66
<b>Operating temperature range</b>	-52°C to +110°C
<b>Approvals</b>	ATEX INERIS: 02ATEX0084 IECEX INE 14.0046X EAC: KG417-039.IT.02.06537
<b>Internal seals</b>	EPDM
<b>Threads</b>	Metric, NPT, UNI-6125
<b>Optional accessories</b>	Locknut, sealing gasket, earthing ring, star washer, protective shroud
<b>Note</b>	1. Armouring rings are usually supplied made of nickel chrome plated brass. Other materials are available upon request. Available only complete set of internal sealing rings 2. Our standard cable gland are suitable for armour clamping up to 1,25mm thickness. In case of higher armour thickness please revert to our Sales department.

### Assembly diagram



## Dimensions



	METRIC	NPT - UNI-6125	CABLE RANGE (mm)		EXTERNAL CABLE Ø (mm) E	DIMENSIONS (mm)				
			MIN	MAX		A	METRIC	NPT	C	D
							B	B		
SIZE 1	M20X1,5	1/2"	6	12	18	42	15	19	30	33
SIZE 2	M25X1,5	3/4"	6	17	24	42	16	19	36	40
SIZE 3	M32X1,5	1"	14	23	30	45	16	25	44	49
SIZE 5S	M40X1,5	1" 1/4	23	36	43	45	18	25	58	65
SIZE 5	M50X1,5	1" 1/2	23	36	43	45	18	25	58	65
SIZE 6	M63X1,5	2"	36	46	57	46	18	25	70	78
SIZE 7	M75X1,5	2" 1/2	44	60	69	46	20	32	87	97
SIZE 8	M80X1,5	3"	56	71	79	46	20	36	97	108

## Specific models available

MODEL	SEAL TYPE	CABLE	TYPE
PNA	SINGLE SEAL	ARMOURED CABLE	-
PB AX	SINGLE SEAL	ARMOURED CABLE	BARRIER TYPE
PSB	SINGLE SEAL	ARMOURED CABLE	LEAD SHEATED CABLE
PNS	SINGLE SEAL	UNARMOURED CABLE	-
PMS	SINGLE SEAL	UNARMOURED CABLE	BARRIER TYPE
PBS	SINGLE SEAL	UNARMOURED CABLE	LEAD SHEATED CABLE