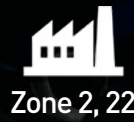


# WG2 SERIES LED WELLGLASS



## LED EFFICIENCY UP TO 175 LM/W

The WG2 Series sets a new benchmark for safety, efficiency, and performance in wellglass lighting fixtures designed for Zone 2 and 22 hazardous areas.

Named after constellations and entirely engineered and manufactured in Italy, the WG2 range includes three models with progressively higher lumen outputs: **Ara**, **Hydra**, and **Vela**.

Each fixture is designed to endure extreme temperatures, heavy mechanical stress, and corrosive environments, ensuring long-lasting and reliable operation.

### Key differentiation features:

- High LED efficiency (up to 175 lm/W), delivering maximum brightness with minimal energy consumption and reduced CO<sub>2</sub> emissions
- Optimized for long-term energy savings, ensuring

consistent performance and lower operating costs

- TECHNOR® AQ/AR junction box for simplified installation
- Junction box with terminal strip, loop-in/loop-out facility, and dual entries
- Stainless steel adjustable mounting bracket for robust and flexible positioning
- Multiple mounting options: wall, ceiling, or pole
- Optional pole-mounting kit for a straight pole
- Optional eyebolt for suspension (indoor use only)
- Optional MARECHAL® certified connector type PNCX for enhanced connection
- Compact circular design with reduced exposed surface

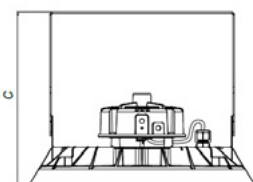
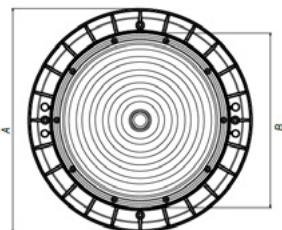


## TECHNICAL FEATURES

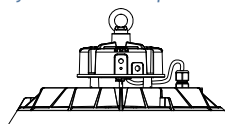
|                                  |   |                                   |  |
|----------------------------------|---|-----------------------------------|--|
| <b>Marking</b>                   | II 3 G Ex ec IIC T4/T3 Gc<br>II 3 D Ex tc IIIC T100°C Dc  | <b>Rated voltage</b>              | 120 - 250 VAC  |
| <b>Approvals</b>                 | FIDI 25 ATEX 0044X<br>IECEX FIDI 25.0016X<br>EAC KG417-039.IT.02.06788  | <b>Frequency</b>                  | 50 - 60 Hz   |
| <b>Zones</b>                     | 2, 22   | <b>Colour rendering Index</b>     | 80 CRI   |
| <b>Material</b>                  | Copper-free aluminium and tempered glass  | <b>Colour temperature</b>         | 4,000 K<br>6,500 K (upon request)  |
| <b>IP</b>                        | IP66  | <b>LED Lifetime (L80) Ta+25°C</b> | > 108,000 h according to IES LM-80-08  |
| <b>Ambient temperature range</b> | With MARECHAL® PNCX:<br>ARA: -20°C to +55°C<br>HYDRA: -20°C to +50°C<br>VELA: -20°C to +45°C<br><br>With TECHNOR® junction box:<br>ARA: -35°C to +55°C<br>HYDRA: -35°C to +50°C<br>VELA: -35°C to +45°C | <b>Power factor</b>               | cos φ ≥ 0.98   |
|                                  |   | <b>Surge protection</b>           | 6 KV   |
|                                  |   | <b>Hardware and screws</b>        | AISI 316L stainless steel  |
|                                  |   | <b>Entries</b>                    | Pre-wired and assembled with MARECHAL® PNCX or pre-wired and assembled with TECHNOR® GRP junction box with 2 entries Ø21mm suitable for M20 fittings |
|                                  |   | <b>Through wiring</b>             | Loop-in/Loop-out   |

## PERFORMANCE DATA

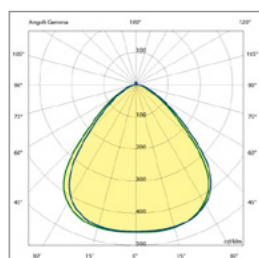
| CODE          | TYPE         | POWER [W] | LUMEN [lm] | LUM. NET [lm] | LED EFF. [lm/W] | DIMENSIONS [MM] |     |     | WEIGHT [kg] |
|---------------|--------------|-----------|------------|---------------|-----------------|-----------------|-----|-----|-------------|
|               |              |           |            |               |                 | A               | B   | C   |             |
| A41A35SX10001 | ARA (JB)     | 88        | 15,360     | 12,680        | 175             | 340             | 265 | 255 | 5.20        |
| A41B35SXN0001 | ARA (PNCX)   | 88        | 15,360     | 12,680        | 175             | 340             | 265 | 255 | 4.50        |
| A43A55SX10001 | HYDRA (JB)   | 118       | 20,596     | 16,992        | 174             | 340             | 265 | 255 | 5.20        |
| A43B55SX10001 | HYDRA (PNCX) | 118       | 20,596     | 16,992        | 174             | 340             | 265 | 255 | 4.50        |
| A42A46SX10001 | VELA (JB)    | 136       | 22,375     | 18,470        | 165             | 340             | 280 | 255 | 5.20        |
| A42B46SXN0001 | VELA (PNCX)  | 136       | 22,375     | 18,470        | 165             | 340             | 280 | 255 | 4.50        |



Optional version with eyebolt for suspension



## PHOTOMETRIC LIGHT CURVE



ARA/HYDRA/VELA

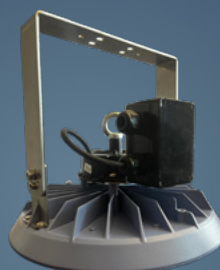
FOR MORE  
DETAILS



[technor.com](http://technor.com)

+39 02 9500151  
[sales@italsmea.com](mailto:sales@italsmea.com)

Connect with us on 



**TECHNOR**  
ITALSMEA

A COMPANY OF MARECHAL ELECTRIC