

FLAMEPROOF - PL../PSRC.. SERIES

Ex d components are available in a wide range of operators/pilot lights PL.. Series and selectors PSRC.. Series allowing numerous combinations with our CP../CPS.. EFDCN/EFSRC series.

PL.. Series includes standard push buttons, emergency push buttons, key selector switches, pilot lights; mechanical operators allow the assembling of a maximum of four contacts.

PSRC.. Series includes on-load switches, change over switches, step switches and selector customized upon request on the base of customer specification.

SPARES & ACCESSORIES

IP rating	IP66/IP67
Ambient temperature range	-50°C to +60°C
Approvals	IMQ 09ATEX0019U
Marking	II 2 GD Ex d IIC Ex tD A21 IP66/IP67
Barrel thread	Metric M32x1,5
Option	Version with AISI 316 L external hexagonal ring

PL.. Series momentary push buttons



CODE SPARE PART	TYPE	COLOUR	WEIGHT (Kg)
B090601000014	PLA-10 PUSH BUTTON	BLACK	0.15
B090601000015	PLA-20 PUSH BUTTON	RED	0.15
B090601000016	PLA-30 PUSH BUTTON	GREEN	0.15
B090601000017	PLA-40 PUSH BUTTON	BLUE	0.15
B090601000018	PLA-50 PUSH BUTTON	YELLOW	0.15
B090601000019	PLA-60 PUSH BUTTON	WHITE	0.15

Contacts are not included

PL.. Series lockable momentary push buttons



CODE SPARE PART	TYPE	COLOUR	WEIGHT (Kg)
B090601000001	PLB-10 PIN-LOCKABLE PUSH BUTTON	BLACK	0.18
B090601000002	PLB-20 PIN-LOCKABLE PUSH BUTTON	RED	0.18
B090601000003	PLB-30 PIN-LOCKABLE PUSH BUTTON	GREEN	0.18

Contacts are not included

PL.. Series Mushroom push buttons

CODE SPARE PART	TYPE	COLOUR	WEIGHT (Kg)
B090601000004	PLC-S NC/NO MUSHROOM PUSH BUTTON TWIST TO RELEASE	RED	0.21
B090601000005	PLC-S NO/NO MUSHROOM PUSH BUTTON TWIST TO RELEASE	RED	0.21
B090601000006	PLC-S NC/NC MUSHROOM PUSH BUTTON TWIST TO RELEASE	RED	0.21
B090601000007	PLC-S-F NC/NO MUSHROOM PUSH BUTTON WITH KEY	RED	0.15
B090601000032	PLC-S-F NC/NC MUSHROOM PUSH BUTTON WITH KEY	RED	0.15
B090601000008	PLC-S-F NO/NO MUSHROOM PUSH BUTTON WITH KEY	RED	0.15
B090601000009	PLC-I MOMENTARY MUSHROOM PUSH BUTTON	RED	0.15

Contacts are not included

PL.. Series Key selector switches

CODE SPARE PART	TYPE	KEY WITHDRAWAL	WEIGHT (Kg)
B090603000025	PLF-10 NO/NC - KEY SELECTOR SWITCH	0	0.20
B090603000027	PLF-10 NO/NO - KEY SELECTOR SWITCH	0	0.20
B090603000023	PLF-10 NC/NC - KEY SELECTOR SWITCH	0	0.20
B090603000026	PLF-10 NO/NC - KEY SELECTOR SWITCH	0-1	0.20
B090603000028	PLF-10 NO/NO - KEY SELECTOR SWITCH	0-1	0.20
B090603000024	PLF-10 NC/NC - KEY SELECTOR SWITCH	0-1	0.20

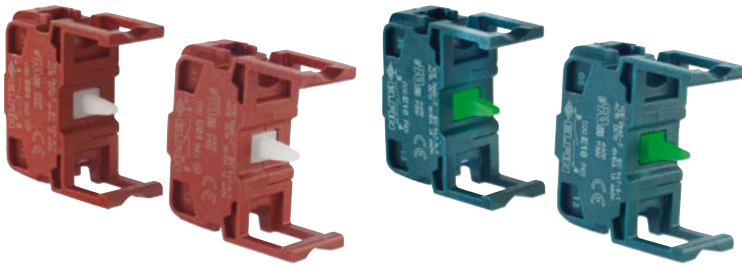
Contacts are not included

PL.. Series mechanical operators

CODE SPARE PART	TYPE	COLOUR	WEIGHT (Kg)
B090601000011	PLC-RIP - RESTORE PB M32X1,5	BLACK	0.10
B090601000012	PLC-RIP - RESTORE PB M32X1,5	RED	0.10
B090601000022	PLC-RIP - RESTORE PB M32X1,5	GREEN	0.10
B090601000010	PLC-R - RESET PB M12X1,75	-	0.10

PL.. Series Contacts

CODE	TYPE	WEIGHT (Kg)
B130700099000	NC CONTACT - PL.. SERIES	0.006
B130700100000	NO CONTACT - PL.. SERIES	0.006



Rated insulated voltage: 660 V AC/DC

Rated thermal current (ith): 6 A

Rated output power:

CAT AC15								CAT DC13									
Tension Ue	V	24	48	60	110	220	380	400	500	600	Tension Ue	V	24	48	60	110	220
Current Ie	A	10	8	6	6	3	2	1,5	1,5	1,2	Current Ie	A	2,5	1,4	1	0,6	0,3



PL.. Series Pilot lights

CODE SPARE PART	TYPE	COLOUR
B090602000021	PLD-10 PILOT LIGHT	WHITE
B090602000030	PLD-20 PILOT LIGHT	RED
B090602000026	PLD-30 PILOT LIGHT	GREEN
B090602000027	PLD-40 PILOT LIGHT	YELLOW
B090602000028	PLD-50 PILOT LIGHT	BLUE

Suitable for LED lamp 3W max. or incandescent lamp 5W max., Vmax.DC 220 V, Vmax.AC 380 V

PL.. series Lamps



CODE	TYPE	VOLTAGE	COLOUR
B090602000001	LED LAMP 12 V-R	12 V	RED
B090602000002	LED LAMP 12 V-V		GREEN
B090602000003	LED LAMP 12 V-G		YELLOW
B090602000004	LED LAMP 12 V-B		WHITE
B090602000006	LED LAMP 24 V-R	24 V	RED
B090602000005	LED LAMP 24 V-V		GREEN
B090602000007	LED LAMP 24 V-G		YELLOW
B090602000008	LED LAMP 24 V-B		WHITE
B090602000024	LED LAMP 24 V-BL		BLUE
B090602000019	LED LAMP 48 V-R	48 V	RED
B090602000018	LED LAMP 48 V-V		GREEN
B090602000020	LED LAMP 48 V-G		YELLOW
B090602000017	LED LAMP 48 V-B		WHITE
B090602000009	LED LAMP 110 V-R	110 V	RED
B090602000010	LED LAMP 110 V-V		GREEN
B090602000011	LED LAMP 110 V-G		YELLOW
B090602000012	LED LAMP 110 V-B		WHITE
B090602000022	LED LAMP 110 V-BL		BLUE
B090602000013	LED LAMP 220 V-R	220 V	RED
B090602000014	LED LAMP 220 V-V		GREEN
B090602000015	LED LAMP 220 V-G		YELLOW
B090602000016	LED LAMP 220 V-B		WHITE
B090602000025	LED LAMP 220 V-BL		BLUE
B090602000038	LED LAMP 400 V-R	400 V	RED
B090100S00762	LED LAMP 400 V-V		GREEN
B090602000039	LED LAMP 400 V-G		YELLOW
B090100S00836	LED LAMP 400 V-B		WHITE
B090602000040	LED LAMP 400 V-BL		BLUE



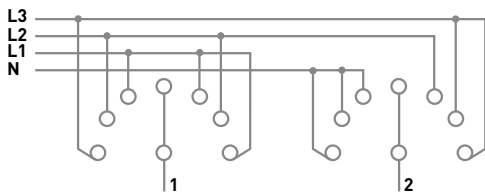
PSRC.. Series On-load switches

CODE SPARE PART	TYPE	N° OF POLES	AMPERE A	WEIGHT (Kg)	DIAGRAM
B090603000013	PSRC-120 - ON LOAD SWITCH	1	20	0.13	
B090603000015	PSRC-220 - ON LOAD SWITCH	2	20	0.16	
B090603000017	PSRC-320 - ON LOAD SWITCH	3	20	0.20	
B090603000020	PSRC-420 - ON LOAD SWITCH	4	20	0.20	
B090603000014	PSRC-132 - ON LOAD SWITCH	1	32	0.20	
B090603000016	PSRC-232 - ON LOAD SWITCH	2	32	0.20	
B090603000018	PSRC-332 - ON LOAD SWITCH	3	32	0.25	
B090603000012	PSRC-432 - ON LOAD SWITCH	4	32	0.25	

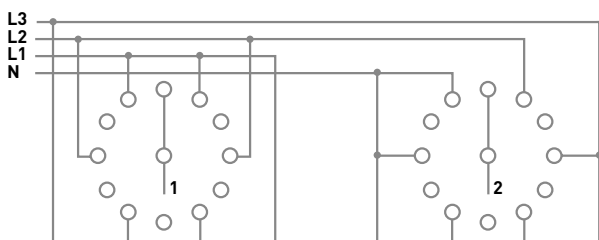
PSRC.. Series Step switch

CODE SPARE PART	TYPE	N° OF POLES	AMPERE A	WEIGHT (Kg)	DIAGRAM
B090603000021	PSRC-C 120 - STEP SWITCH	1	20	0.13	
B090603000022	PSRC-C 220 - STEP SWITCH	2	20	0.20	
B090603000007	PSRC-C 320 - STEP SWITCH	3	20	0.25	
B090603000008	PSRC-C 420 - STEP SWITCH	4	20	0.30	
B090603000003	PSRC-C VOLTMETER 7 POS.	-	-		SEE BELOW
B090603000004	PSRC-C VOLTMETER 12 POS.	-	-		SEE BELOW
B090100S00760	PSRC-C AMPERMETER 4 POS.	-	-		SEE BELOW

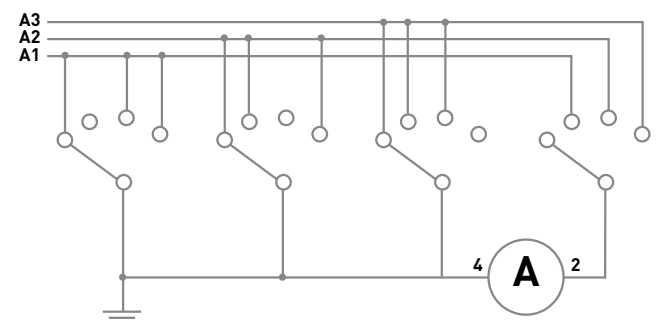
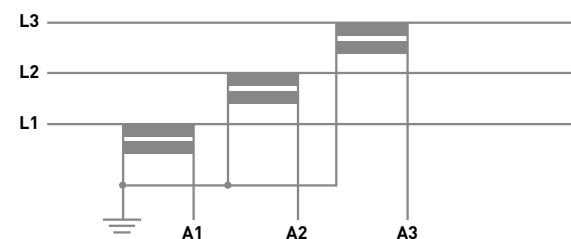
Voltmeter selector switch 7 pos.



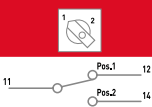
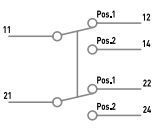
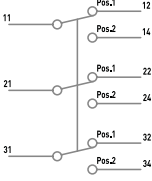
Voltmeter selector switch 12 pos.



Ammeter selector switch 4 pos.



PSRC.. Series Change-over switch

CODE SPARE PART	TYPE	N° OF POLES	AMPERE A	WEIGHT (Kg)	DIAGRAM
B090603000009	PSRC-D 120 - CHANGE OVER SWITCH	1	20	0.13	
B090603000010	PSRC-D 220 - CHANGE OVER SWITCH	2	20	0.20	
B090603000029	PSRC-D 320 - CHANGE OVER SWITCH	3	20	0.25	

PSRC Series Rated operational characteristic

AMPERE A	AC-1 Ie MAX. (A)	AC-3 Ie MAX. (A)	AC-11 Ie MAX. (A)	Ui max. (V)
20	25	12	9	690
32	36	22	16	690

Special versions can be manufactured upon request. For further information contact our Sales Office.