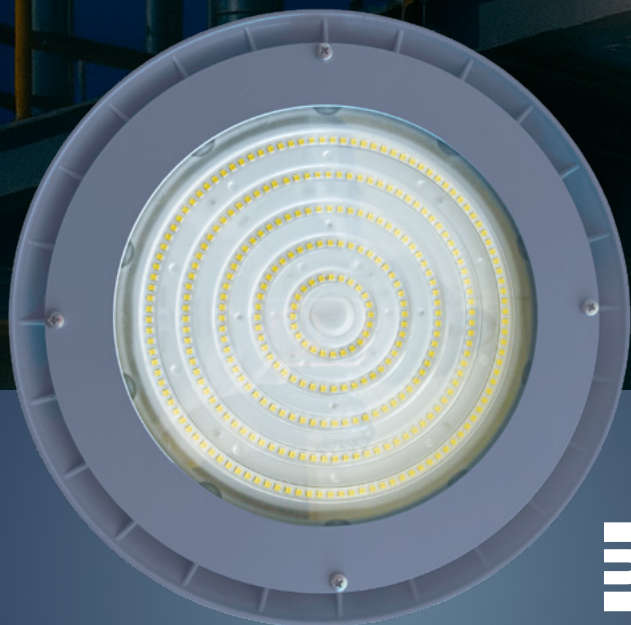
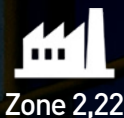


WG2 SERIES

LED WELLGLASS

LED EFFICIENCY
UP TO
175 LM/W



 **TECHNOR**
ITALSMEA

A COMPANY OF MARECHAL ELECTRIC

EFFICIENT LIGHTING

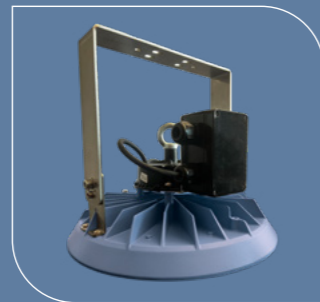
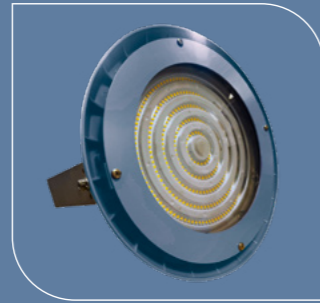
The WG2 Series sets a new benchmark for safety, efficiency, and performance in wellglass lighting fixtures designed for Zone 2 and 22 hazardous areas.

Named after constellations and entirely engineered and manufactured in Italy, the WG2 range includes three models with progressively higher lumen outputs: Ara, Hydra, and Vela.

Each fixture is designed to endure extreme temperatures, heavy mechanical stress, and corrosive environments, ensuring long-lasting and reliable operation.

Key differentiation features:

- High LED efficiency (up to 175 lm/W), delivering maximum brightness with minimal energy consumption and reduced CO₂ emissions
- Optimized for long-term energy savings, ensuring consistent performance and lower operating costs
- TECHNOR® AQ/AR junction box for simplified installation
- Junction box with terminal strip, loop-in/loop-out facility, and dual entries
- Stainless steel adjustable mounting bracket for robust and flexible positioning
- Multiple mounting options: wall, ceiling, or pole
- Optional pole-mounting kit for a straight pole
- Optional eyebolt for suspension (indoor use only)
- Optional MARECHAL® certified connector type PNCX for enhanced connection
- Compact circular design with reduced exposed surface



ARA/HYDRA/VELA

MARECHAL® PNCX

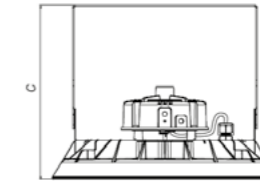
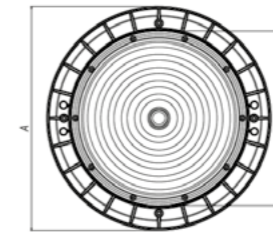
TECHNOR® AQ/AR

TECHNICAL FEATURES

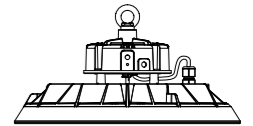
Marking	II 3 G Ex ec IIC T4/T3 Gc II 3 D Ex tc IIIC T100°C Dc
Approvals	FIDI 25 ATEX 0044X IECEX FIDI 25.0016X EAC KG417-039.IT.02.06788
Zones	2, 22
Material	Copper-free aluminium and tempered glass
IP	IP66
Ambient temperature range	With MARECHAL® PNCX: ARA: -20°C to +55°C HYDRA: -20°C to +50°C VELA: -20°C to +45°C With TECHNOR® junction box: ARA: -35°C to +55°C HYDRA: -35°C to +50°C VELA: -35°C to +45°C
Rated voltage	120 - 250 VAC
Frequency	50 - 60 Hz
Colour rendering Index	80 CRI
Colour temperature	4,000 K 6,500 K (upon request)
LED Lifetime (L80) Ta+25°C	> 108,000 h according to IES LM-80-08
Power factor	cos φ ≥ 0.98
Surge protection	6 KV
Hardware and screws	AISI 316L stainless steel
Entries	Pre-wired and assembled with MARECHAL® PNCX or pre-wired and assembled with TECHNOR® GRP junction box with 2 entries Ø21mm suitable for M20 fittings
Through wiring	Loop-in/Loop-out

PERFORMANCE DATA

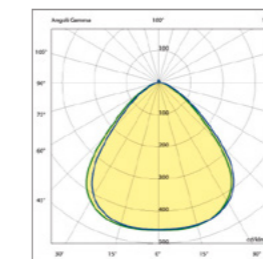
CODE	TYPE	POWER [W]	LUMEN [lm]	LUM. NET [lm]	LED EFF. [lm/W]	DIMENSIONS [MM]			WEIGHT [kg]
						A	B	C	
A41A35SX10001	ARA (JB)	88	15,360	12,680	175	340	265	255	5.20
A41B35SXN0001	ARA (PNCX)	88	15,360	12,680	175	340	265	255	4.50
A43A55SX10001	HYDRA (JB)	118	20,596	16,992	174	340	265	255	5.20
A43B55SX10001	HYDRA (PNCX)	118	20,596	16,992	174	340	265	255	4.50
A42A46SX10001	VELA (JB)	136	22,375	18,470	165	340	280	255	5.20
A42B46SXN0001	VELA (PNCX)	136	22,375	18,470	165	340	280	255	4.50



Optional version with eyebolt for suspension



PHOTOMETRIC LIGHT CURVE



ARA/HYDRA/VELA

ABOUT US

TECHNOR ITALSMEA designs and manufactures customized explosion-proof solutions designed for use in classified areas with risk of explosion.

Established in 1969, for over 50 years, the company has been specializing in Ex d, Ex de, Ex e, and Ex p certified equipment, suitable for both onshore and offshore applications in the oil & gas, petrochemical, and chemical industries. TECHNOR®'s current portfolio includes LED lighting fixtures, signalling systems, distribution panels, junction boxes, local control stations, plugs, socket-outlets, connectors, and accessories.

Every TECHNOR® solution is engineered and manufactured in Italy and fully tailored to meet specific customer needs. All products comply with ATEX, IECEx, and TR-CU standards, ensuring unmatched safety, reliability, and durability in the most demanding environments.

TECHNOR ITALSMEA is a subsidiary of MARECHAL ELECTRIC, a global leader in low-voltage electrical connections for industrial environments and environments with potentially explosive atmospheres.



 **TECHNOR**
ITALSMEA

A COMPANY OF MARECHAL ELECTRIC



FOR MORE DETAILS



technor.com

+39 02 9500151
sales@italsmea.com

Connect with us 