

JUNCTION BOXES MXBJ



MARECHAL ELECTRIC FRANCE

II 2 G Ex eb IIC T⁽²⁾ Gb
 or Ex ia or ib IIC T⁽²⁾ Gb
 or Ex eb ia or ib IIC T⁽²⁾ Gb
 II 2 D Ex tb IIC T⁽²⁾ Db

IECEX LCI 11.0026X

LCIE 11 ATEX 3028X

[2] Depending on ambient temperature and terminals used.



IP66



0,2 -
300 mm²



GRP
METAL



IK09



-25 °C⁽¹⁾
+60 °C



ATEX



1, 2,
21, 22

[1] For other ambient temperatures, please contact us.

OTHER FEATURES

Dimensions	Consult us for the different sizes available.
Material	GRP casing, aluminium, stainless steel AISI 316L.
Cable entries	M12 - M80.



Existing terminal
configurations up to 400 A.

STANDARDS

International and European IEC/EN standards

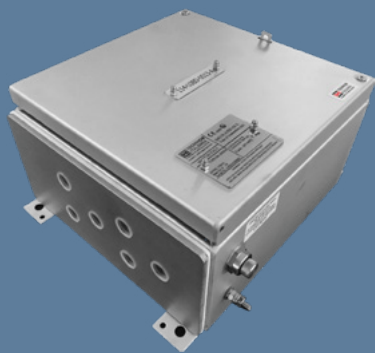
62262, 60079-0, 60079-7, 60079-11, 60079-31.



ACCESSORIES ON REQUEST

- Earth stud
- Earth bar
- Shield bar
- Junction bar
- Hinges
- Mounting
- Purge or breather
- Earthing plate
- Metal gland with or without earth ring

A WIDE RANGE OF
CONFIGURATIONS,
SIZES,
AND MATERIALS
ARE AVAILABLE,
CONTACT US!



SOCKET-OUTLET COMBINATION BOXES MXBS



MARECHAL ELECTRIC FRANCE

Ex II 2 G Ex eb IIC T⁽²⁾ Gb
or Ex ia or ib IIC T⁽²⁾ Gb
or Ex eb ia or ib IIC T⁽²⁾ Gb
Ex II 2 D Ex tb IIC T⁽²⁾ Db

IECEx LCI 11.0042X

LCIE 11 ATEX 3047X

[2] Depending on ambient temperature and connectivity used.



IP66



0,22 -
400 mm²



GRP
METAL



IK09



-25 °C⁽¹⁾
+60 °C



ATEX



1, 2,
21, 22

[1] : For other ambient temperatures, please contact us.

OTHER FEATURES

Dimensions	Consult us for the different sizes available.
Material	Casing in GRP, aluminium alloy or stainless steel. Screws in stainless steel.
Junction	Terminal blocks. Feed through and loop-in loop-out connection.
Cable entries	M12 to M80 depending on the size of the box/Polyamide cable gland for unarmoured cable. Nickel plated brass cable gland for unarmoured cable and armoured cable (with plate or washer bonding inside the box).



Existing terminal
configurations up to 680 A.

ASSOCIATED MARECHAL® PRODUCTS

DECONTACTOR™	DXA1, DXN1, DXN3, DXN6
Connectors	PNCX, SPeX
Multicontact connectors	PXN12C, DXN25C, DXN37C

STANDARDS

International and European IEC/EN standards	62262, 60079-0, 60079-7, 60079-11, 60079-31.
---------------------------------------------	----------------------------------------------



ACCESSORIES ON REQUEST

- Inclined sleeve
- Earth stud
- Earth bar
- Hinges
- Mounting brackets
- Purge or breather
- Earthing plate
- Metal gland with or without earth ring

A WIDE RANGE OF
CONFIGURATIONS,
SIZES,
AND MATERIALS
ARE AVAILABLE,
CONTACT US!

