

DISTRIBUTION AND JUNCTION BOXES

DISTRIBUTION AND JUNCTION

CD DISTRIBUTION BOX



P. 202

B2 JUNCTION BOXES



P. 204

SB JUNCTION BOXES



P. 206

From 16 A up to 90 A
Differential protection
30 mA
IP66/IP69
water-and dust-tight
Composed of two parts
fixed on hinges
Prewired with easy access
to the connection terminals

IP66/IP67
water-and dust-tight
2 Dimensions
(120x120x91 mm
and 160x160x91 mm)
Up to two drilled hole per
side (M40 max.)
Option with hinged lid.

Ideal solution for corrosive
environment.
AISI 316L stainless steel.
Max. dimensions
950x750x200mm
Hinged lid.
Internal mounting plate
included.
Optionnal drilled holes
up to M80.



SELECTION GUIDE

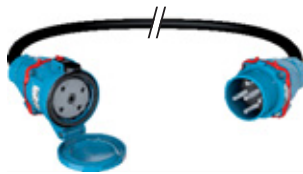
CUSTOMISED SOLUTIONS

BOXES



P. 208

EXTENSIONS



CABLE REELS



In direct connection with its production of industrial electrical socket-outlets, MARECHAL ELECTRIC has the internal skills to offer you complete customized solutions. From cable assemblies to power distribution boxes.

BOXES

SOLUTIONS FOR TUNNEL APPLICATIONS
PLEASE REFER TO PAGE 210



16 A → 90 A

440 V
U_{MAXI}

DISTRIBUTION BOXES CD



IP66
IP69 ⁽¹⁾



GRP



IK09



-40 °C
+60 °C

(1) IP44 with domestic socket-outlets



Pre-wired boxes.
For empty version,
contact us.

OTHER FEATURES

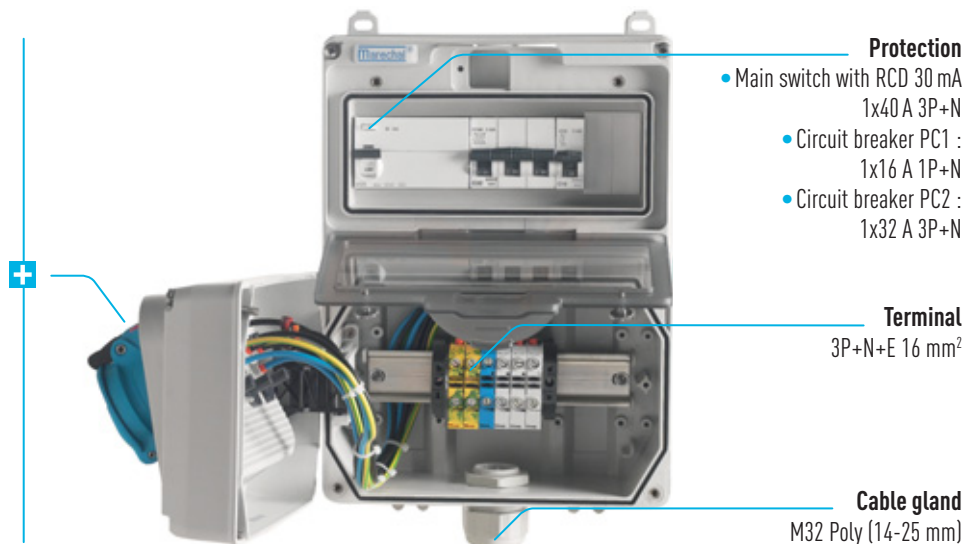
Fastenings	Captive stainless steel screws
Wiring capacity	2 x 1,5 mm ² to 5 x 35 mm ²
Cable entries	M50 max.
Housing dimensions (HxWxD) in mm	342 x 225 x 156
Assembly	10 modules max.



DECONTACTOR™ DSN1
16 A - 1P+N+E
220-250 V



DECONTACTOR™ DSN3
32 A - 3P+N+E
220-250 V/380-440 V



Protection

- Main switch with RCD 30 mA
1x40 A 3P+N
- Circuit breaker PC1 :
1x16 A 1P+N
- Circuit breaker PC2 :
1x32 A 3P+N

Terminal

3P+N+E 16 mm²

Cable gland

M32 Poly (14-25 mm)

INSIDE BOX COMPOSITION

Box	Main switch with RCD 30 mA	Circuit breaker Socket 1	Circuit breaker Socket 2	Terminal	Cable gland mm
CD1		1x16 A 1P+N 30 mA		1P+N+E 16 mm ²	M25 POLY (9-18)
CD2	1x25 A 1P+N	1x16 A 1P+N	1x16 A 1P+N	1P+N+E 16 mm ²	M25 POLY (9-18)
CD3		1x16 A 3P+N 30 mA		3P+N+E 16 mm ²	M25 POLY (9-18)
CD4		1x16 A 3P 30 mA		3P+E 16 mm ²	M25 POLY (9-18)
CD5	1x25 A 3P+N	1x16 A 3P+N	1x16 A 3P+N	3P+N+E 16 mm ²	M25 POLY (9-18)
CD6*		+ 2 fuses 6 A Gg		1P+N+E 16 mm ²	M25 POLY (9-18)
CD7	1x25 A 1P+N	1x16 A 1P+N	1x16 A 1P+N	1P+N+E 16 mm ²	M25 POLY (9-18)
CD8		1x32 A 1P+N 30 mA		1P+N+E 16 mm ²	M32 POLY (14-25)
CD9	1x40 A 1P+N	1x32 A 1P+N	1x32 A 1P+N	3P+N+E 16 mm ²	M32 POLY (14-25)
CD10		1x32 A 3P+N 30 mA		3P+N+E 16 mm ²	M32 POLY (14-25)
CD11	1x40 A 3P+N	1x32 A 3P+N	1x32 A 3P+N	3P+N+E 16 mm ²	M32 POLY (14-25)
CD12	1x40 A 3P+N	1x16 A 1P+N	1x32 A 3P+N	3P+N+E 16 mm ²	M32 POLY (14-25)
CD13	1x40 A 3P+N	1x16 A 1P+N	1x32 A 3P+N	3P+N+E 35 mm ²	M40 POLY (18-32)
CD14	1x40 A 3P+N	1x16 A 1P+N	1x32 A 3P+N	3P+N+E 16 mm ²	M32 POLY (14-25)
CD15		1x63 A 3P+N 30 mA		3P+N+E 16 mm ²	M40 POLY (18-32)
CD16*	1x25 A 3P+N	+ 2 fuses 6 A Gg	1x16 A 3P+N	3P+N+E 16 mm ²	M32 POLY (14-25)

* CD6 and CD16 boxes are equipped with a 160 VA 230 V/24 V transformer. Maximum operating temperature: 40 °C

Type	French standard socket 16 A - 230 V	16 A socket	16 A socket			32 A socket		63 A socket	Associated* MARECHAL® DECONTACTOR™	
		24 V	220-250 V	380-440 V	220-250 V 380-440 V	220-250 V	220-250 V 380-440 V	220-250 V 380-440 V		
Box	2P+E	2P	1P+N+E	3P+E	3P+N+E	1P+N+E	3P+N+E	3P+N+E	DSN range	DS range
CD1			1						6114015CD1	3114015CD1
CD2			2						6114015CD2	3114015CD2
CD3					1				6114017CD3	3114017CD3
CD4				1					6114013CD4	3114013CD4
CD5					2				6114017CD5	3114017CD5
CD6		1							611408ACD6	311408ACD6
CD7	1		1						6114015CD7	3114015CD7
CD8						1			6134015CD8	3134015CD8
CD9						2			6134015CD9	3134015CD9
CD10							1		6134017CD10	3134017CD10
CD11							2		6134017CD11	3134017CD11
CD12			1				1		6134017CD12	3134017CD12
CD13			1				1		6134017CD13	3134017CD13
CD14	1						1		6134017CD14	3134017CD14
CD15								1	6164017CD15	
CD16		1 (PN range)			1				6114017CD16	3114017CD16

* CD6 and CD16 boxes are equipped with a 160 VA 230V/24V transformer. Maximum operating temperature: 40 °C.

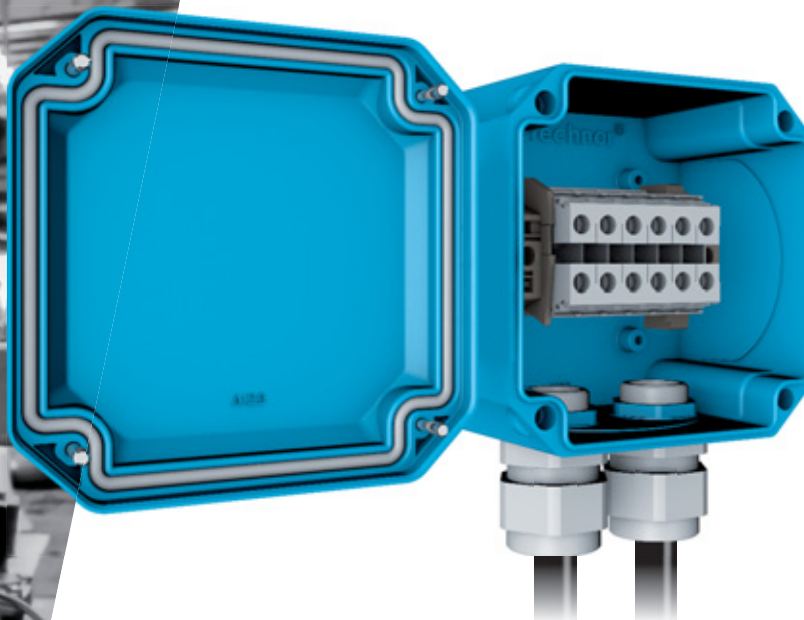
INFOS +

The CD box can be mounted on a support.
Support frame ref.: 9CHAS-CD



Other configurations on request.
Please contact us where applications require more than 2 outlets.

JUNCTION BOXES B2



IP66
IP67



2 x 1,5 mm²
» 5 x 35 mm²



GRP



IK08



-40 °C
+60 °C

OTHER FEATURES

Fastenings	Captive stainless steel screws
Two dimensions (W x H x D) in mm	120x120x91, up to two drilled holes per side (M32 max.) 160x160x91, up to two drilled holes per side (M32 max.)
Glow-wire flammability index according to IEC/EN 60695-2-12	850 °C
Isolation voltage	1 000 V AC



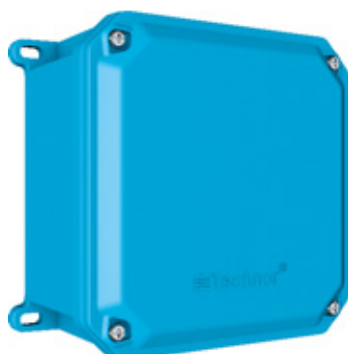
Box are supplied with a DIN rail and without drilled holes as a standard.

Please contact us for your specific configurations.

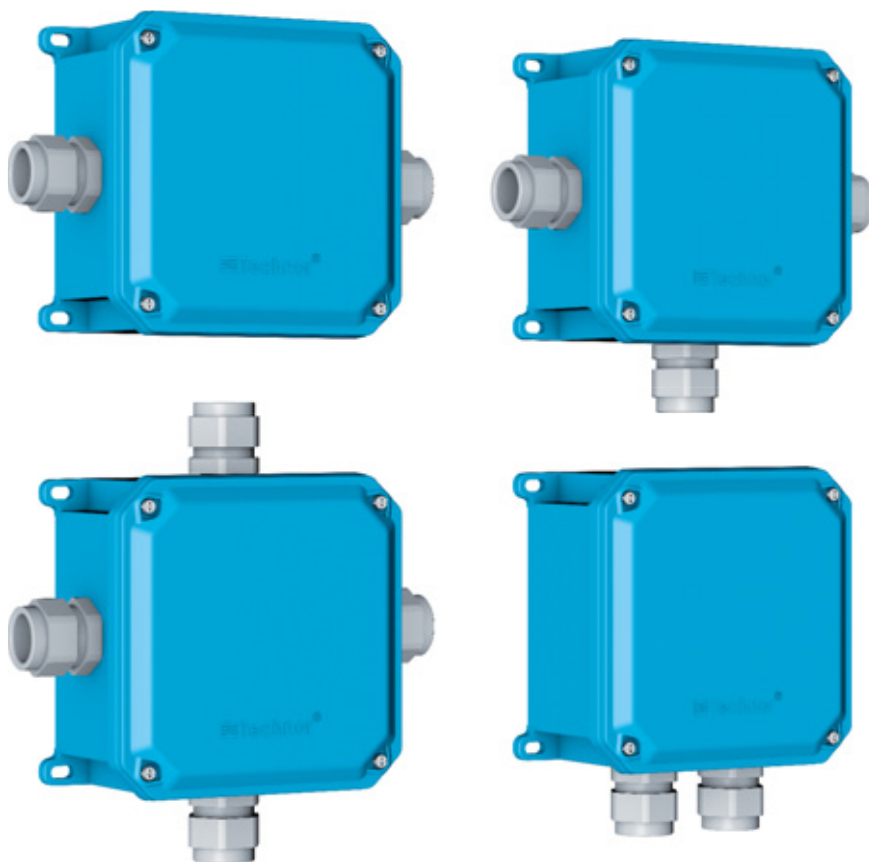
TYPE

TYPE	Reference
Empty box 120x120x91*	509ACP1
Empty box 160x160x91*	509ACP2

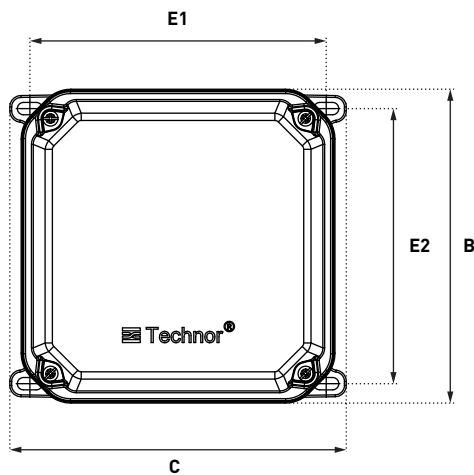
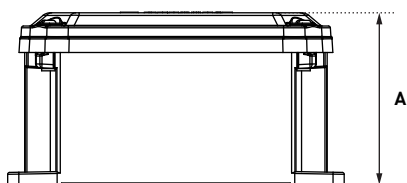
*hinges are not included, earthing bar on request.



EXAMPLE CONFIGURATIONS



DRAWINGS AND DIMENSIONS



	A	C	B	E1	E2
120x120	91	141	126	117	106
160x160	91	178	166	157	146

JUNCTION BOX SB



IP66
IP67



STAINLESS STEEL
316L



IK10



-50 °C
+95 °C

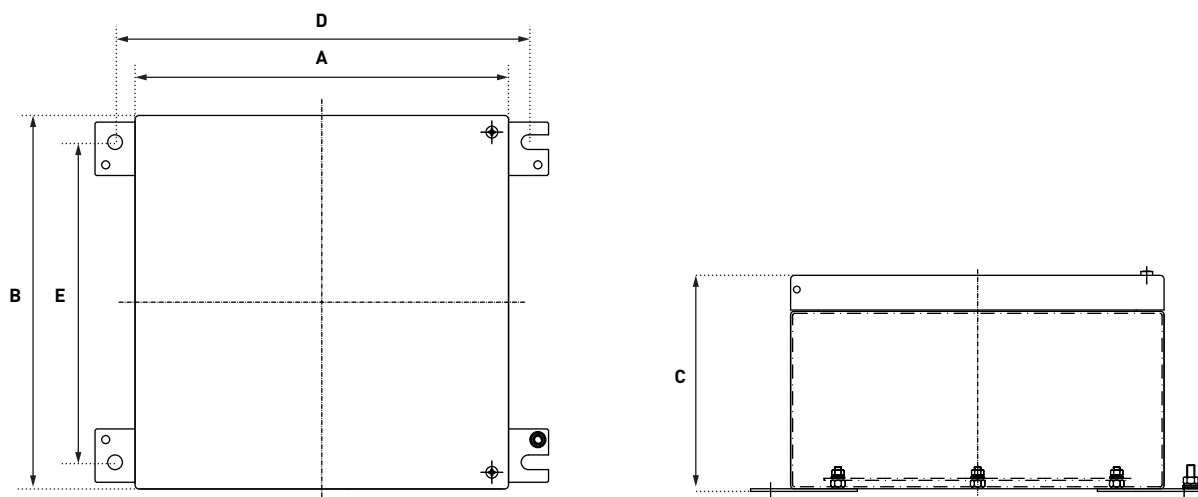
The SB is an IP66/IP67 junction box used for the most severe applications as in the food and beverage industry. All boxes sizes except the 150x150x100 version are equipped with:

- an internal mounting plate
- an earthing terminal
- a cable entry plate placed in the lower part of the box.

OTHER FEATURES

Material	Stainless steel 316L - 1.5mm thickness
Fastenings	Stainless steel
Drilling (for cable glands)	Up to M80
Hinged lid with silicon sealing	

REFERENCES AND DIMENSIONS



REFERENCE	DIMENSIONS [mm]				
	A	B	C	D	E
B016Y12064815*	150	150	100	180	-
B016Y12064816	200	200	160	230	160
B016Y12064817	280	280	160	310	240
B016Y12064818	350	350	160	380	310
B016Y12064819	380	380	200	410	340
B016Y12064820	500	500	200	530	460

* Only fitted with a rail DIN.



CUSTOMISED SOLUTIONS

BOXES, EXTENSIONS
AND CABLE REEL

In direct connection with its production of industrial electrical socket-outlets, MARECHAL ELECTRIC has the internal skills to offer you complete customized solutions. From cable assemblies to power distribution boxes.

Contact us.



EXAMPLE OF SOLUTIONS



Portable rubber box



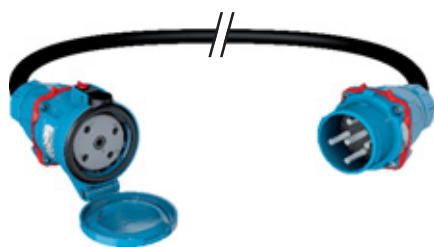
Automatic cable reel



Equipped cable reel



Boxes of all sizes and materials, GRP, sheet metal or stainless steel.



Extension cable



Portable service box